



Bluetooth Magnetic Credit Card / Driver's License Reader and Transaction Receipt Printer

SETUP FOR TREO700W, Treo 700 WX and HP6515 (240x240 Pocket PC)

Just follow these easy steps setting up your Merchant on the GO Printer to the TREO700W, Treo 700WX and HP6515 Pocket PC. Then configure Merchant on the Moveto work with your Merchant on the GO. Retire the wire!



STEP 1: Reset your Merchant on the GO.

Before you can pair the Merchant on the GO with your iPAQ6315, the Merchant on the GO should first be reset. To do this...

1. Turn off the Merchant on the GO (if it is already on).
2. Plug in the charger for the Merchant on the GO.
3. Press and Hold the ON button for at least 3 seconds.
4. When the paper starts advancing, release the ON button.
A diagnostic sheet will be printed.
5. After the print out completes, the printer is initialized.

STEP 2: Pair your Merchant on the GO with your Handheld Device.

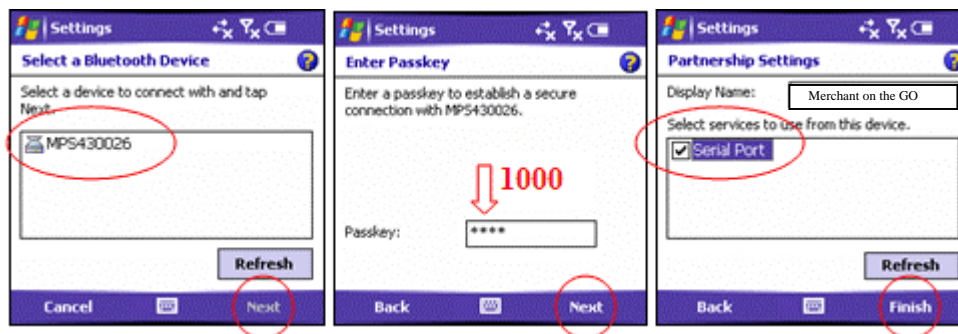
1. From the Start Menu select Settings > Connections > Bluetooth
2. Turn on Bluetooth



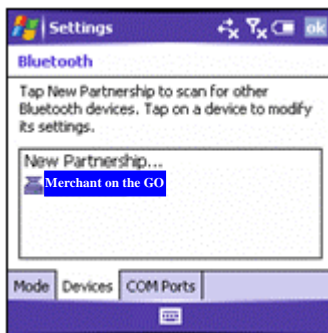
3. Tap the Device tab
4. Turn ON Merchant on the GO (if it is not already on) and tap New Partnership...
Wait until the Mobile Merchant on the GO appears in the List (ie: MSP430026)



5. Select the Merchant on the GO (ie: MSP430026) and Tap Next
6. Next enter Passkey 1000
7. Tap Next
8. Select Serial Port from the list of services
You can also change the display name (in the example here it is renamed to Spectrum).
9. Tap Finish.

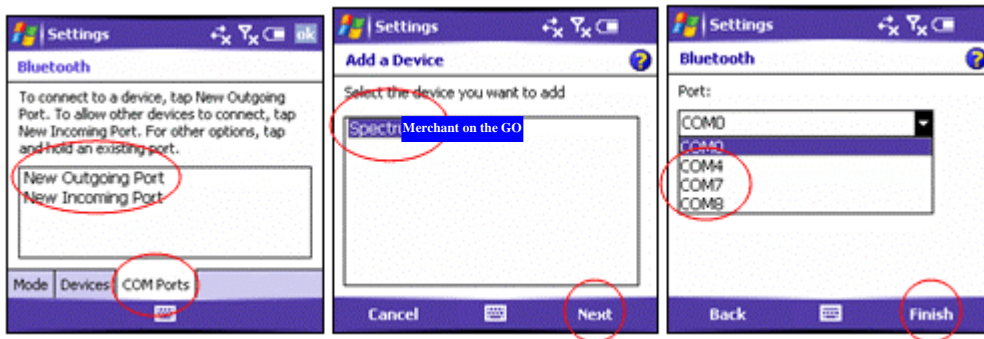


Your Merchant on the GO is now paired with your device and called Spectrum.
Next you need to assign the Com Port.



STEP 3: Set the Bluetooth Com Port on your Handheld Device.

1. From Bluetooth Settings, tap the COM Ports tab
2. Tap New Outgoing Com Port
3. Select the Merchant on the GO device (ie: now renamed as Merchant on the GO)
4. Tap Next
5. Under Port, select a new Com Port.
We recommend that you use Port COM7 if available.
6. Tap Finish when done

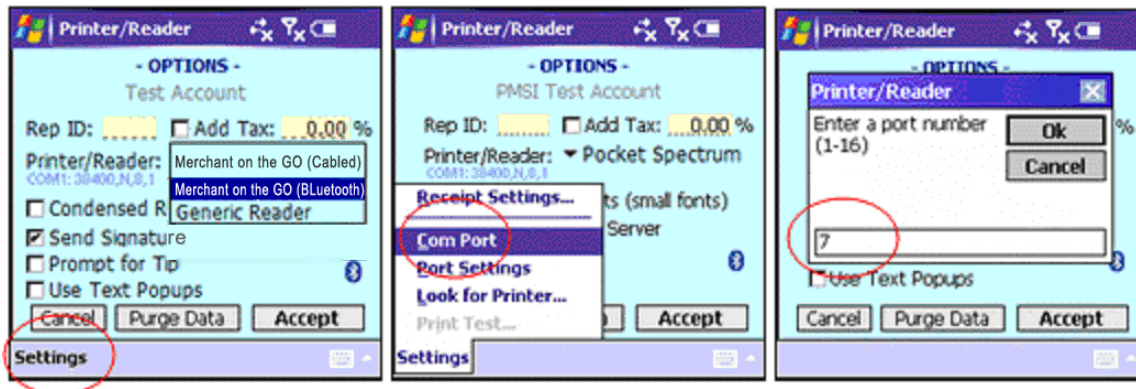


Your Merchant on the GO is now setup to use the Bluetooth connection on Com 7.
Next you need to setup the Merchant on the Move to work on the same Com Port (7).



Step 4: Set the Printer/Reader and Com Port in Merchant on the Move.

1. Open Merchant on the Move
2. Log into your Account
3. Go to the Options screen
4. Change the Printer/Reader to Merchant on the GO
Confirm the changes.
5. Tap Settings, then Com Port
6. Change the port number to the one selected above (i.e., Com 7)
7. Tap Ok, then Accept.



Your handheld device is now setup to work with the Merchant on the Move software and Merchant on the GO!

If you are on the sales screen when the Merchant on the GO is off and you would like to read a card, turn on the printer, wait for the single beep and linefeed, then click on the blue Bluetooth icon at the top right of the screen. The icon will turn red briefly until communications are established.

Copyright © 2006 PrimaryMerchant Solutions, Inc. All Rights Reserved.
All artwork, logos, Merchant on the Move, Merchant on the GO, and PrimaryMS.com are trademarks of Primary Merchant Solutions, Inc.