



## Bluetooth Magnetic Credit Card / Driver's License Reader and Transaction Receipt Printer Setup for Treo 650 & 700P

Just follow these simple steps to link the Merchant on the GO Printer to your Treo 650 or 700P. Retire the wire!



### Reset your Merchant on the GO.

Before you can pair the Merchant on the GO with your Treo 650 or 700P, the Merchant on the GO should first be reset. To do this...

1. Turn off the Merchant on the GO (if it is already on).
2. Plug in the charger for the Merchant on the GO.
3. Press and Hold the ON button.
4. When the paper starts advancing, release the ON button.  
A diagnostic sheet will be printed.
5. After the print out completes, the printer is initialized.



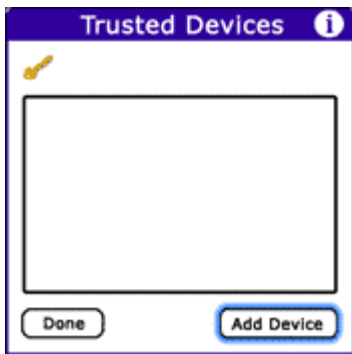
Select the Bluetooth icon.



Make sure Bluetooth is turned ON. Set "Discoverable to "YES", then tap on "Setup Devices"



We want to set this up as a secure, trusted device, so tap on "Trusted Devices"



Make sure other Bluetooth devices in the immediate area are off, or disabled. TURN ON your Merchant on the GO, then tap on "Add Device", to begin the pairing process.



At "Show", select "Nearby Devices", then tap "OK"



After a short period, the Merchant on the GO will show up on your list. The actual number shown may differ, but it will begin with "MPS"



Tap on this entry to select it, and then tap "OK"



Your Treo 650 will then prompt you for the encryption Passkey for your printer.



Enter "1000" (no quotes, please), remembering to press the black button on the left in the bottom row twice to "lock in" numbers.

(Otherwise, pressing "1" will give you an "e")

Then press "OK"



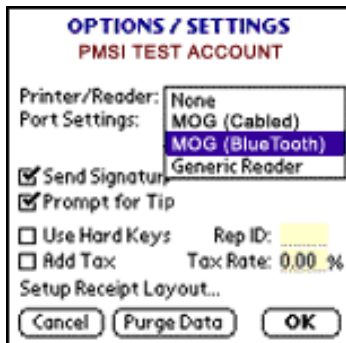
Press "Done".



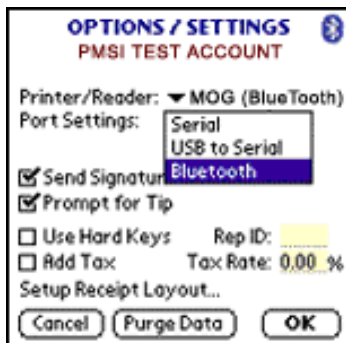
Change "Show" to "Trusted Devices", as that is all we will want to see from now on. Then, tap "OK", to finish the procedure. Press the "Home" key to return to the main menu.



Start Merchant on the Move, Log in, and select "OPTIONS" in the lower right hand corner.



Under "Printer / Reader" Select "MOG (Bluetooth)"



Under "Port Settings" select "Bluetooth"



Verify that the numbers under "Bluetooth" are "38400,N,8,1"

Press "OK"

## Your Treo 650 or 700P is now setup to work with our Merchant on the Move software.

If you are on the sales screen when the Merchant on the GO is off and you would like to read a card, turn on the printer, wait for the single beep and linefeed, then click on the Bluetooth icon at the top right of the screen. The printer will then be initialized to read the card.

---

Copyright © 2006 Primary Merchant Solutions, Inc. All Rights Reserved.  
All artwork, logos, Merchant on the Move, Merchant on the GO, and PrimaryMS.com are trademarks of Primary Merchant Solutions, Inc.